

# RHA ALUMINUM EQUIPMENT ACCESS ROOF HATCH

### Application

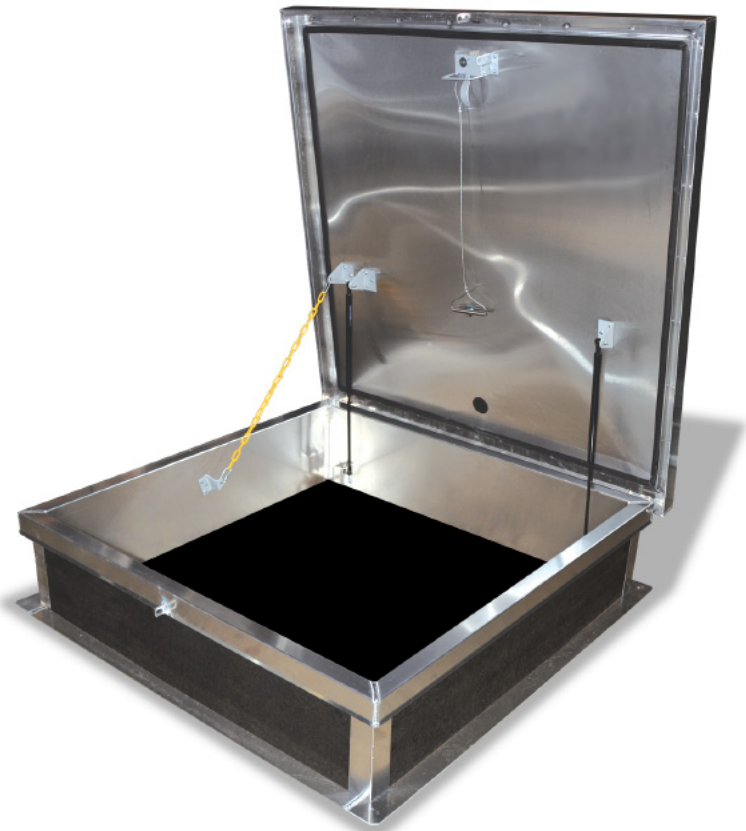
- Acudor Equipment Access Roof Hatches are designed to provide convenient, economical access to the roof of a building where larger openings are required. This opening allows for equipment to be installed or removed from a building through the roof.

### Features RHA

- Weather tight construction
- Convenient one-hand operation
- 12" high insulated curb
- Supports 40lbs./sq. ft. live load

### Optional Features RHA

- Painted and Anodized finishes (RHA)
- Polycarbonate domes for daylighting
- Louvered Curbs
- Curb Mounted Units
- Curb pitch corrected for sloped roof
- Higher curb heights for "green roof" applications



### RHA Specifications:

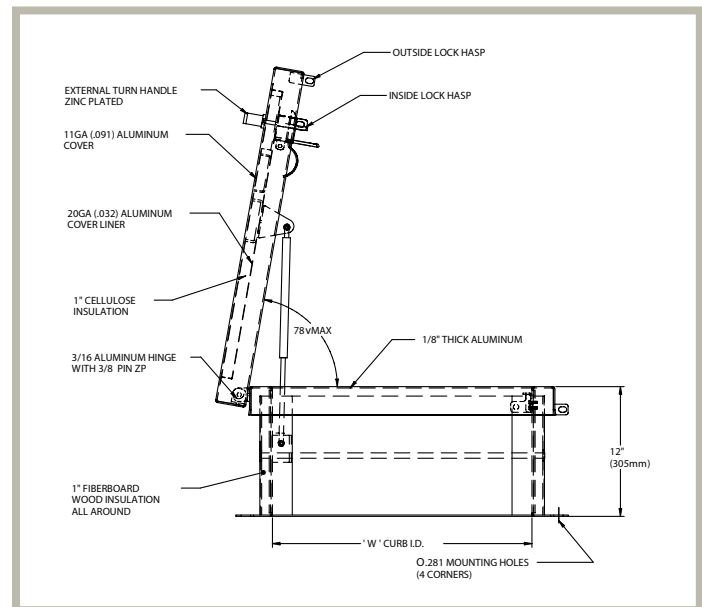
**Cover:** Double-skin construction ("in box type design") with 1" cellulose insulation and a continuous EPDM foam weather/draft seal gasket that is attached to the inside of cover to provide a flush, tight fit. Designed to support a live load of 40lbs./sq. ft., the cover is 1/8" thick aluminum with a 20 gauge aluminum inside liner.

**Curb:** 1/8" thick aluminum with 1" thick fiberboard roof insulation at curb exterior. Curb is 12" high, with 3.375" wide bottom flange and pre-drilled mounting holes.

**Hinge:** Heavy duty Aluminum pintle hinges with 3/8" pin  
**Opening:** Gas spring operators allow cover to open and close with ease. Inside pull handle allows for easy control when closing cover.

**Door Latch:** Self latching, zinc plated outside T handle with stainless steel inside lock and lever assembly. Unit also has inside and outside padlock provisions.

**Finish:** Mill finish.



### RHA STANDARD SIZES (other sizes available)

Model	Curb ID W&L inches (mm)	Weight per Hatch lbs. (kg.)
A5656	48 x 48 (1220 x 1220)	115 (52.3)

For detailed specifications see submittal sheet