

ACF-2064

SPECIALTY DOORS

Steel Flush Acoustical Access Door

Highest STC & OITC Rating in the INDUSTRY

Application

- This flush access door is ideal for use on Acoustical walls where maintaining STC Rating (Sound Transmission Class) and OITC Rating (Outdoor-Indoor Transmission Class) is required

Product Features

- Zinc coated steel provides superior corrosion resistance
- Type 304 Stainless steel with #4 satin polish also available
- Tested and evaluated to ASTM: E90(09), ASTM: E413(16), ASTM: E1332(16) and certified to STC Rating 64 and OITC Rating 54

ACF-2064 Door Specifications:

Material: 18 Gauge Satin Coat Steel

Door: 18 Gauge, encapsulated design with 2" thick acoustical mineral liner and 0.11" thick mineral filled vinyl barrier

Frame: 18 Gauge, press bent for strength and rigidity, with 1" wide trim flanges and 1" thick acoustical mineral liner

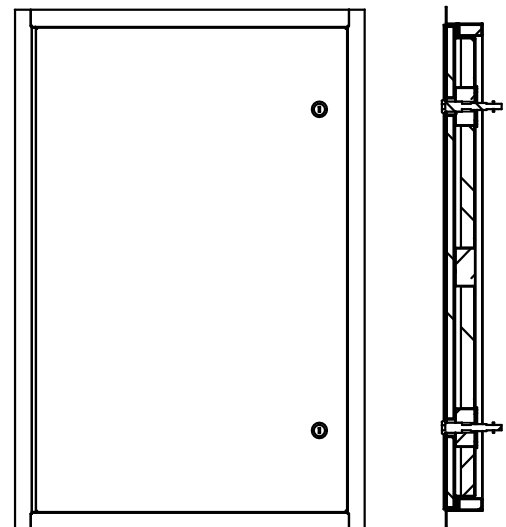
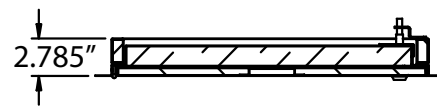
Gasket: Silicone perimeter seal gasket

Hinge: Continuous exposed stainless steel piano hinge

Standard Lock: Screw driver operated Compression Latch

Acoustic Rating: This door has been tested and evaluated to ASTM: E90(09), ASTM: E413(16), ASTM: E1332(16) and certified to STC Rating 64 and OITC Rating 54.

Finish: 5 stage iron phosphate preparation with prime coat of white baked-on enamel



ACF-2064 STANDARD SIZES

Nominal Door Size W&H		Weight per Door		
Inches	mm	Latches	lbs.	kg.
12 x 12	300 x 300	1	14.3	6.5
18 x 18	450 x 450	1	26.5	12
24 x 24	610 x 610	1	44.0	20
24 x 36	610 x 914	2	64.0	29