



# FOUR PIECE 84-INCH FLUSH MOUNT RAIL KIT

## Save Time and Money

Low-cost rail-based PV module mounting system provides easy installation, simple wire management, great strength and economical shipping



- Kit contains all parts required to mount 4 typical 60-cell or 72-cell modules\*
- Use with any roof attachment that can accommodate a 5/16-inch bolt
- Kit can be shipped by UPS
- Cables can be run inside rails to keep them off the roof

\* Module clamps fit any module with frame thickness of 28mm to 44mm



**Best Wire Management** - PV cables and wiring for module-level electronics fits inside rails to avoid time consuming wire management.



**Use Any Roof Attachments** - Our rails mount to QuickBolt, QuickMount, FlashFoot, S-5 or any roof attachment that can be used with a 5/16 inch bolt.



**One Wrench Size** - Install with ease and minimal tools. A 1/2-inch socket fits all fasteners.



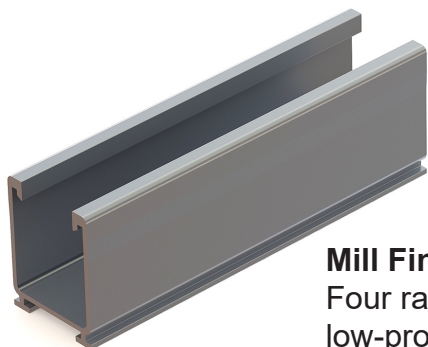
**UL 2703 Listed** - All components meet the UL standards and have a Class A Fire Rating for Type 1 and 2 modules.



**PE Certified** - Pre-stamped engineering letters available for most states.

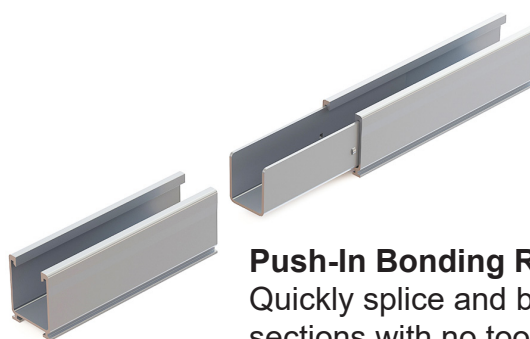
# Tamarack Flush Mount 84-inch Rail Kit

## Install Four Typical PV modules\*



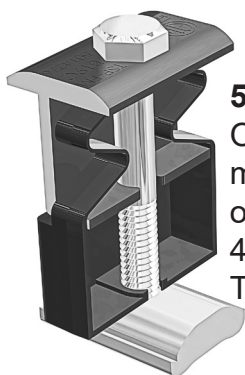
### Mill Finish Rails

Four rails for attractive low-profile mounting of up to four modules with four-foot roof attachment spacing. Certified for up to 180 MPH wind speed and 20 PSF snow load.



### Push-In Bonding Rail Splice

Quickly splice and bond rail sections with no tools or fasteners. Top Clamps and Rail Mounts can be co-located with splice. Four splices included.



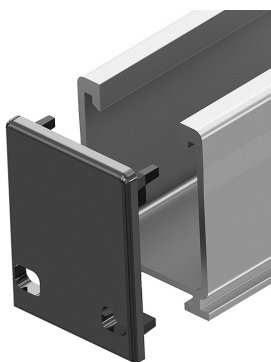
### 50-50 Clamp

One clamp can be used as a mid-clamp or an end-clamp on modules with 30 mm to 40 mm frame height. Ten clamps are included.



### Rail Mount and L-Foot

Quickly and securely mount the rail from either side, to any L-Foot, Tile Hook or specialty flashing with a hole or slot for a 5/16-inch bolt. Eight mounts are included.



### Push-On End Cap

Four caps, for two rows give the rail system a finished look while allowing drainage.



### Wire Management Clip

Kit includes 12 clips that can be pushed into top of rail to keep cables in place.

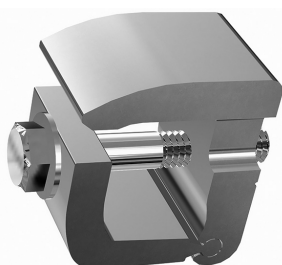


### Ground lug

Use one per module row to ground rail with bare 6 to 10 AWG copper wire. Four clamps are included.

### Channel End Clamp

This end clamp replaces the 50/50 clamp at the end of the row of modules for better aesthetics. It is your choice which part to use. Four clamps are included.



### MLPE Adapter

Use this adapter for mounting microinverters and optimizers on the rails under the modules. Use one adapter for each device. Four adapters are included.

