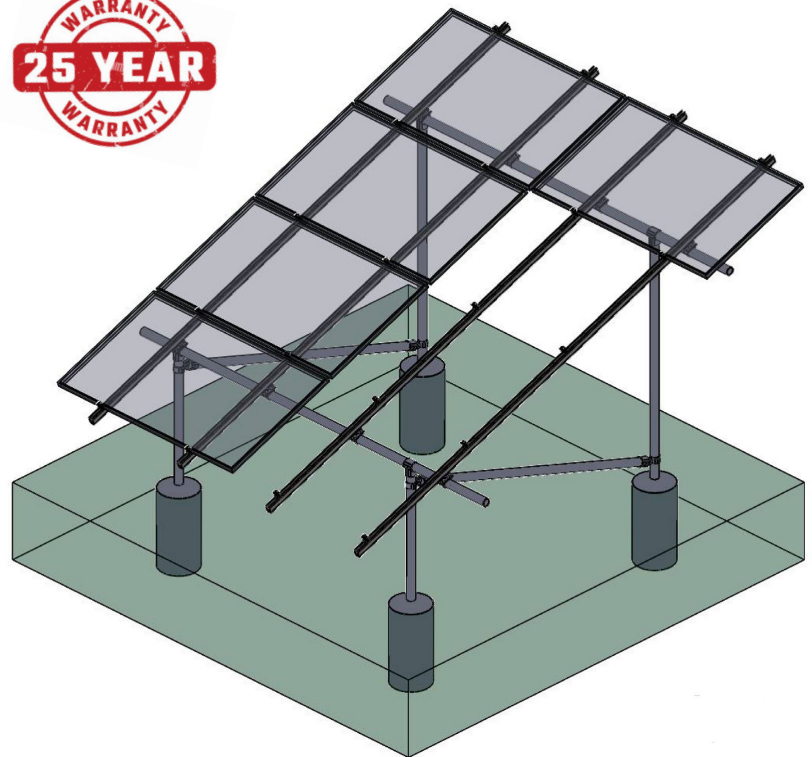


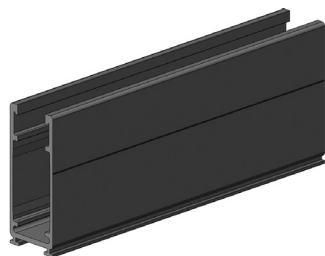
TAMARACK GROUND MOUNT SYSTEM

- Combine our 3.1 rails with 2-IN Schedule-40 or -80 galvanized steel pipe (purchased separately).
- Use four 70-inch rails + two structural splices per column = two 140-IN rails to mount 3 modules per column.
- Use four 93-IN rails + two structural splices per column = two 186-IN rails to mount 4 modules per column.
- The maximum PV module width:
 - 45-IN on 4 module columns
 - 46.16-IN on 3 module columns
- Quick easy assembly suitable for almost any terrain.



- ☒ **Simple Design** - Arrays of 3 or 4 modules high and any width required
- ☒ **Easy to install** - No welding or drilling - two wrench sizes fit all fasteners
- ☒ **UL 2703 Listed** - All components meet UL 2703 standards for bonding and grounding
- ☒ **PE Certified** - Pre-stamped engineering letters available for most states
- ☒ **Easy to Configure** - Unlimited system size with tilt angles from 0 to 45 degrees
- ☒ **Visually Appealing** - Simple to adjust for perfect alignment, even if surface is irregular
- ☒ **Simple Wire Management** - Cables and wires fit inside rails
- ☒ **Extremely Robust** - Rated for wind speeds up to 170 MPH and ground snow loads of up to 70 PSF

Tamarack's Ground Mount makes it easy and economical to install a PV system on any surface



3.1 inch Mill Finish Rail

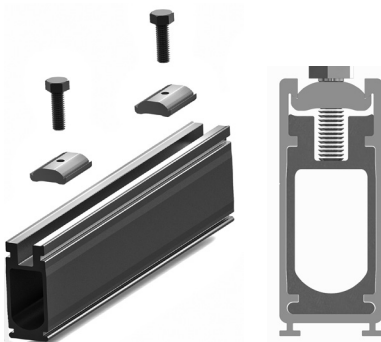
Our 3.1-inch heavy duty rail provides great performance with extreme wind and snow loads.

90910-US - 70-IN - 8-Rail Pack

90927-US - 70-IN - 144-Rail Pallet

90545 - 93-IN - 8-Rail Pack

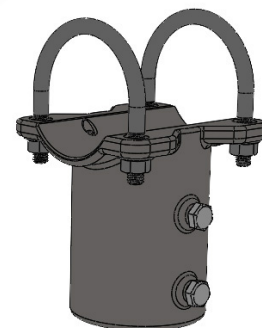
90552 - 93-IN - 144-Rail Pallet



3.1 Structural Rail Splice

Quickly splice and bond 3.1-inch rail sections. Top Clamps can be co-located with splice. Wires and connectors can be run through opening.

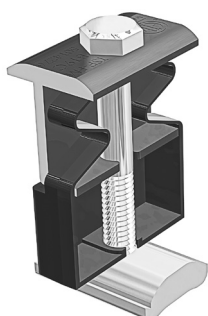
89556 - Box of 6 w/channel nuts and bolts



Pole Cap for 2-IN post

Connect vertical 2-IN pipe to horizontal 2-IN pipe. U-bolts are included.

90682 2-Pack



5050 Clamp

One clamp can be used as a mid-clamp or an end-clamp on modules with 30 mm to 40 mm frame height.

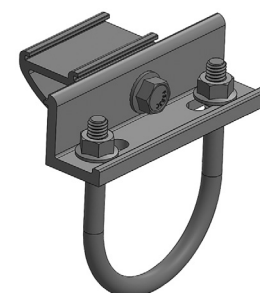
88450 12-Pack



Swivel Tee Fitting

Use for wind cross-bracing front to back vertical posts.

89778 1-Pack



Pipe Mount

Securely mount the rail to the horizontal 2-inch pipe. U-bolts are included.

88955 8-Pack



Wire Clip

Pushes into top of rail to keep cables in place.

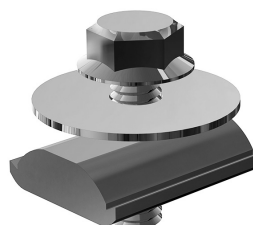
88747 24-Pack



Ground Lug

Use one per module column to ground rail with bare 6 to 10 AWG copper wire.

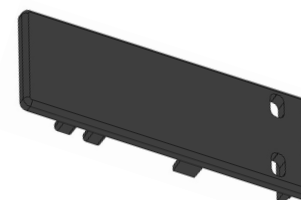
88504 8-Pack



MLPE Adapter

Use for mounting micro-inverters and optimizers on the rails under the solar modules.

88481 12-Pack



Rail End Cap

Gives the installation a finished look and keeps insects from nesting in the rails.

89846 8-Pack