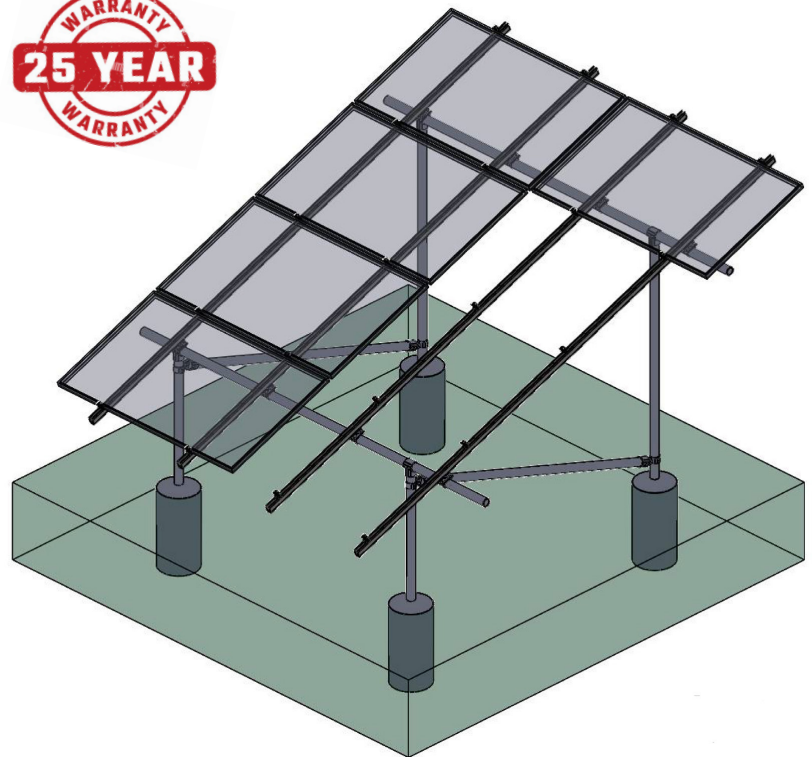


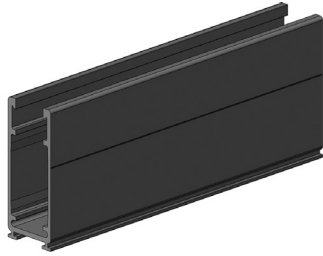
TAMARACK GROUND MOUNT SYSTEM

- Combine our 3.1 rails with 2-IN or 3-IN Schedule-40 or -80 galvanized steel pipe (purchased separately).
- Use four 70-inch rails + two structural splices per column = two 140-IN rails to mount 3 modules per column.
- Use four 93-IN rails + two structural splices per column = two 186-IN rails to mount 4 modules per column.
- The maximum PV module width:
 - 45-IN on 4 module columns
 - 46.16-IN on 3 module columns
- Quick easy assembly suitable for almost any terrain.



- Simple Design** - Arrays of 3 or 4 modules high and any width required
- Easy to install** - No welding or drilling - two wrench sizes fit all fasteners
- UL 2703 Listed** - All components meet UL 2703 standards for bonding and grounding
- PE Certified** - Pre-stamped engineering letters available for all 50 states and DC
- Easy to Configure** - Unlimited system size with tilt angles from 0 to 45 degrees
- Visually Appealing** - Simple to adjust for perfect alignment, even if surface is irregular
- Simple Wire Management** - Cables and wires fit inside rails
- Extremely Robust** - Rated for wind speeds up to 170 MPH and ground snow loads of up to 140 PSF

Tamarack's Ground Mount makes it easy and economical to install a PV system on any surface



3.1 inch Mill Finish Rail

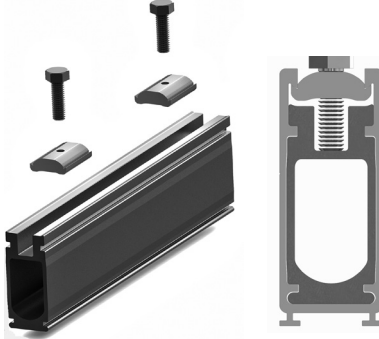
Our 3.1-inch heavy duty rail provides great performance with extreme wind and snow loads.

#90910 - 70-IN - 8-Rail Pack

#90927 - 70-IN - 144-Rail Pallet

#90545 - 93-IN - 8-Rail Pack

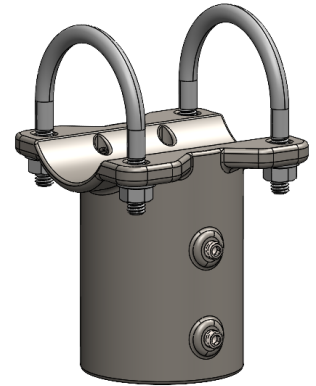
#90552 - 93-IN - 144-Rail Pallet



3.1 Structural Rail Splice

Quickly splice and bond 3.1-inch rail sections. Top Clamps can be co-located with splice. Wires and connectors can be run through opening.

#89556 - Splice w/channel nuts and bolts 6-Pack

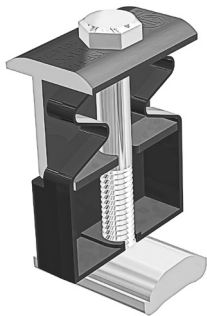


Pole Cap

Connect vertical pipe to horizontal pipe. U-bolts are included.

For 2-IN post: #90682 2-Pack

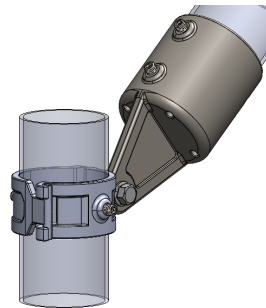
For 3-IN post: #91238 2-Pack



5050 Clamp

One clamp can be used as a mid-clamp or an end-clamp on modules with 30 mm to 40 mm frame height.

#88450 12-Pack

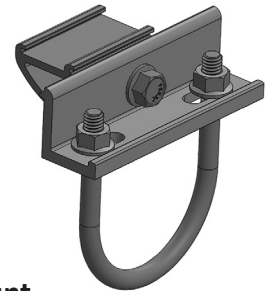


Swivel Tee Fitting

Use for wind cross-bracing front to back vertical posts.

For 2-IN post: #90699

For 3-IN post: #91245 2-Pack



Pipe Mount

Securely mount the rail to the horizontal pipe. U-bolts are included.

For 2-IN pipe: #88955 8-Pack

For 3-IN pipe: #90491-B 2-Pack



Wire Clip

Pushes into top of rail to keep cables in place.

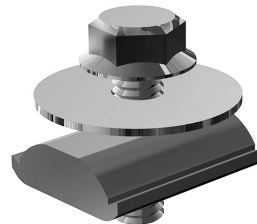
#88474 24-Pack



Ground Lug

Use one per module column to ground rail with bare 6 to 10 AWG copper wire.

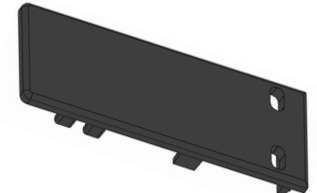
#88504 8-Pack



MLPE Adapter

Use for mounting micro-inverters and optimizers on the rails under the solar modules.

#88481 12-Pack



Rail End Cap

Gives the installation a finished look and keeps insects from nesting in the rails.

#89846 8-Pack