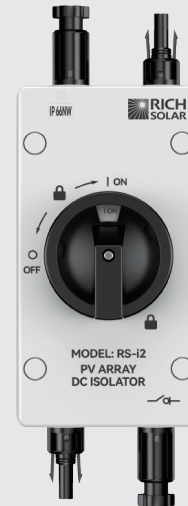




User Manual

PV ARRAY DC ISOLATOR



Model: RS-i2

THIS MANUAL CONTAINS IMPORTANT SAFETY AND OPERATING INSTRUCTIONS FOR PV ARRAY DC ISOLATOR. PLEASE READ THIS MANUAL AND FOLLOW THE INSTRUCTIONS EXACTLY.

☎ 1-800-831-9889

✉ support@richsolar.com

🌐 www.richsolar.com

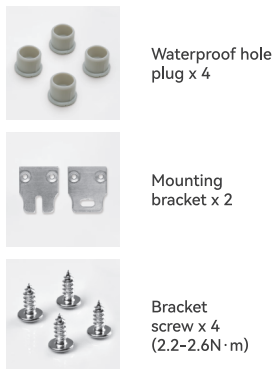
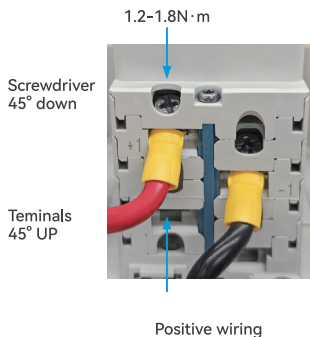
📍 5550 Jurupa St, Ontario, CA 91761

PV ARRAY DC ISOLATOR

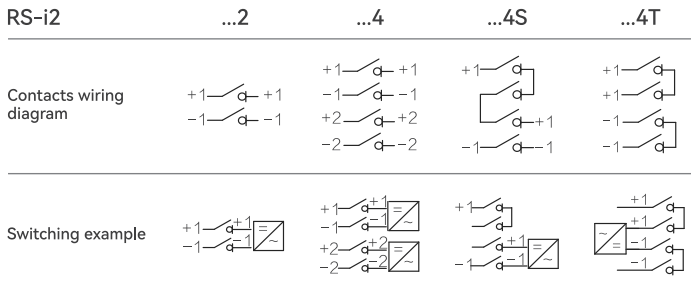
INSTRUCTIONS FOR INSTALLATION AND OPERATION

WIRING

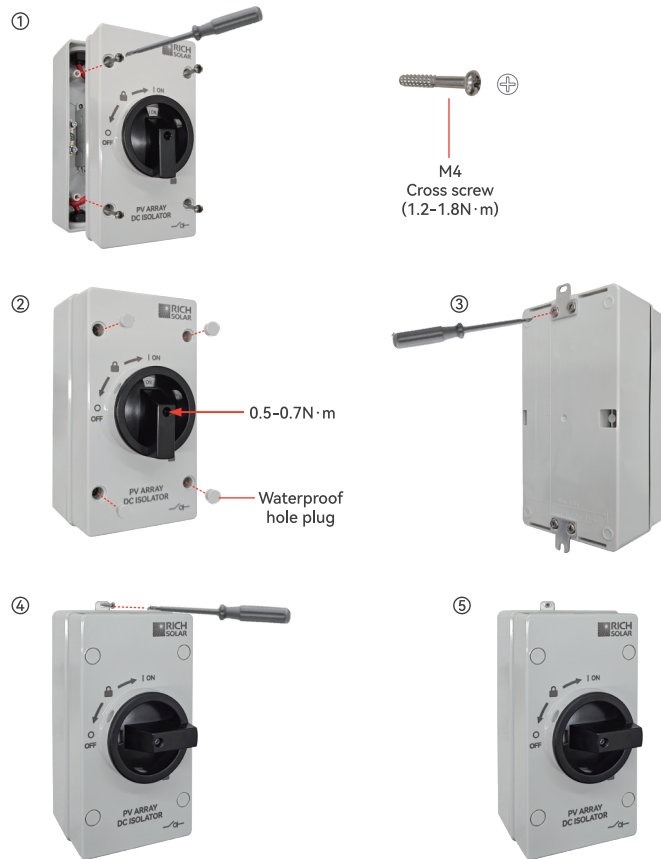
LIST OF ACCESSORIES



WIRING DIAGRAM / SWITCHING EXAMPLES



INSTALLATION INSTRUCTIONS



At this point, the installation is complete and the circuit is live.
Electrocution hazard. Please practice electrical safety procedures.