

E-Power Go APP

User Manual V1.0



1. Downloading and Installing the App

NOTICE

- To ensure the stability of each function, you are advised to use mobile phones running Android 10.0, iOS 13.0, or later versions.
- Use mobile phones that support the access to the Internet.
- Use mobile phones that support the WLAN function.

Procedure

Method 1: Download and install the app from the app store.

- Android mobile phone users: Search for **E-Power Go** in Google Play.
- iPhone users: Search for **E-Power Go** in the App Store



Method 2: Scan the QR code to download and install the app.



Android Users



iPhone Users

NOTE

Users who select method 2 can select the download method based on the mobile phone type.

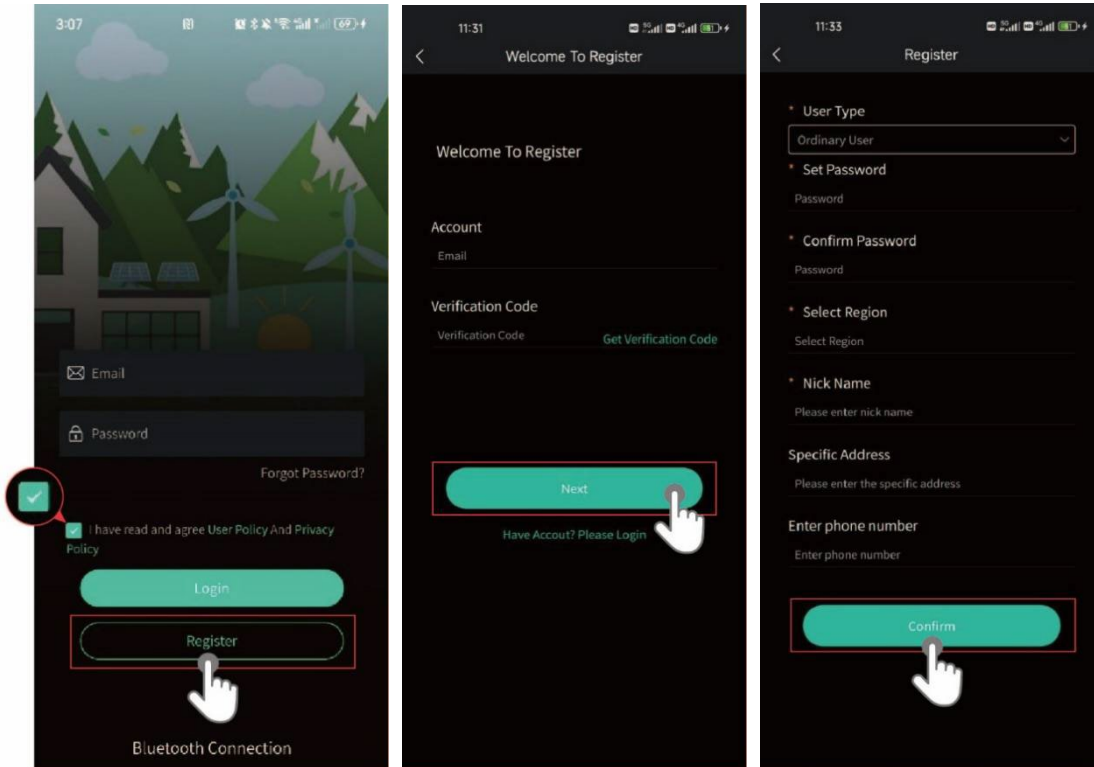
- Android mobile phone users: Download from Google Play.
- iPhone users: Download from App Store.

When you select **Download via the Browser**, if a security warning message is displayed indicating that the app is from an external source, tap **ALLOW**.

2. Sign up and Log in

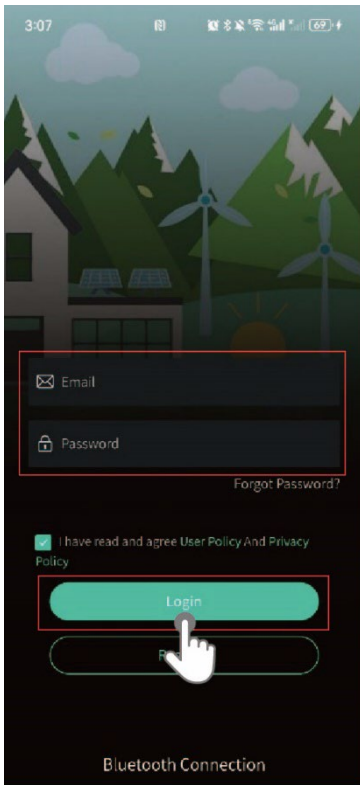
Sign up


Launch the App, click **"Register"** to sign up.



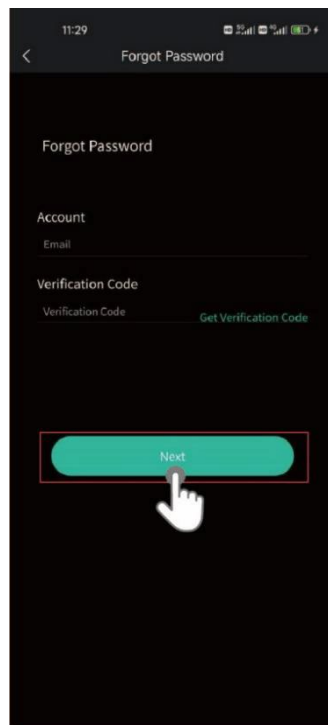
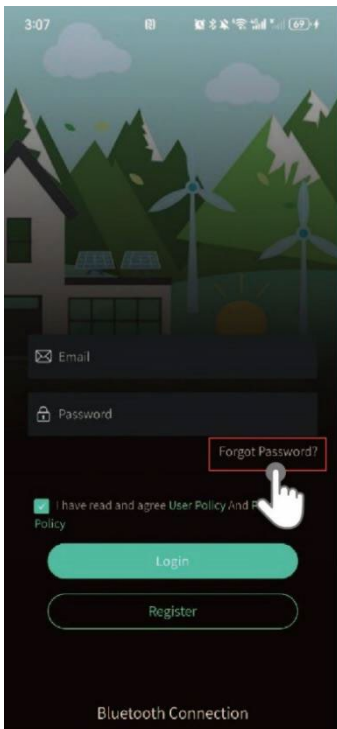
Log in

If you have an account already, tap **"Login"** to enter account name and password.



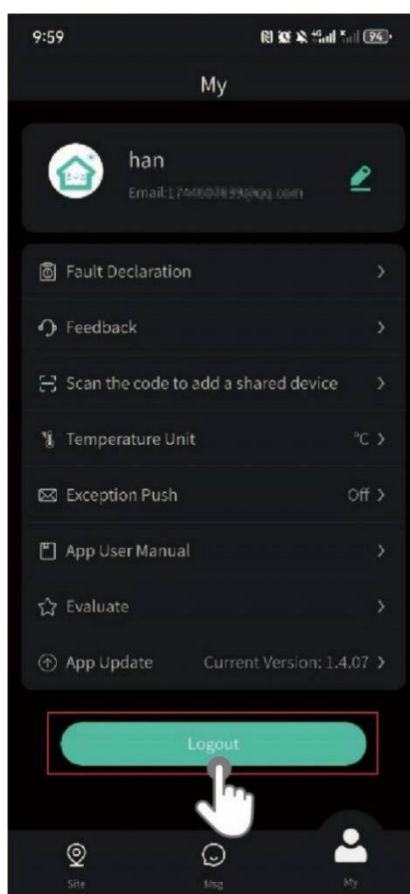
 **NOTE**

If you forget your password, on the login page, click **"Forgot Password?"** and follow the steps to reset it



Log out

On the home screen, tap **“MY”**. On the MY screen, tap **“Log out”**.



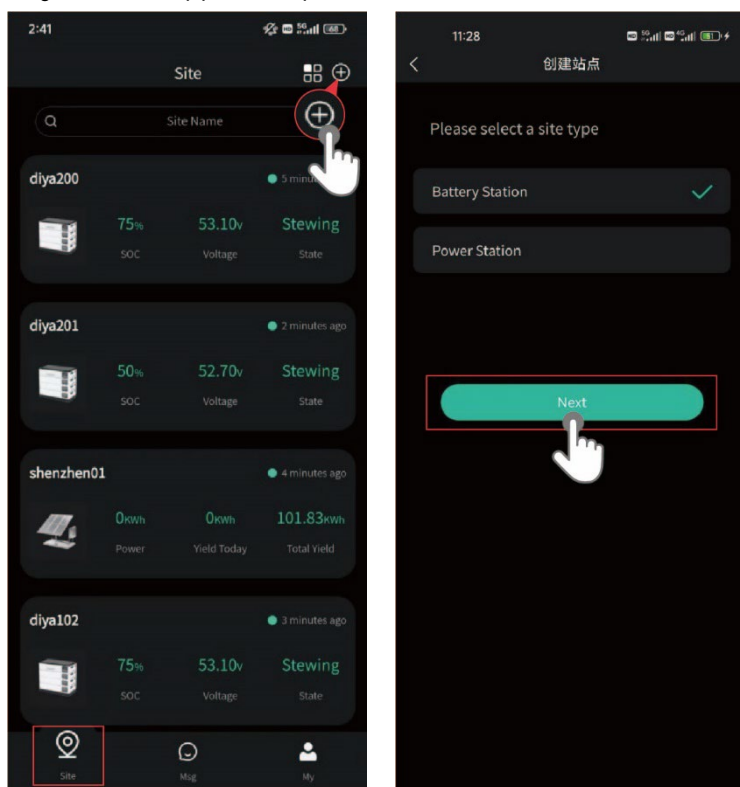
3. Collector Connection


Device's Wi-Fi hotspot connection

Procedure

Create station

Log in to the app and tap Site on the Home screen. Click the “+” in the upper right of the page.



 **NOTE**

There are two types of stations, one is “**Power Station**”, the other is “**Battery Station**”. “**Battery Station**” can only add to one collector. Multiple collectors can be added to a “**Power Station**” and the added collectors are displayed in the Station page. Choose the right type of the station and follow the steps to create it.

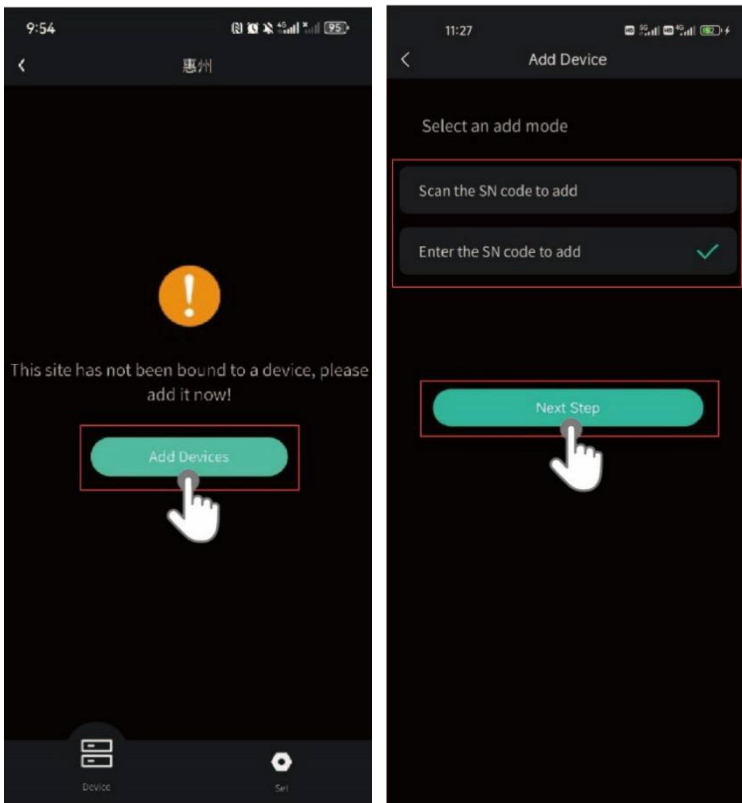
Add collector

NOTICE

When establishing multiple power stations, it is crucial to select the specific station for adding the collector beforehand. This step prevents equipment from being added incorrectly, which could lead to data confusion and affect your assessment of the stations' operational status.

Procedure:

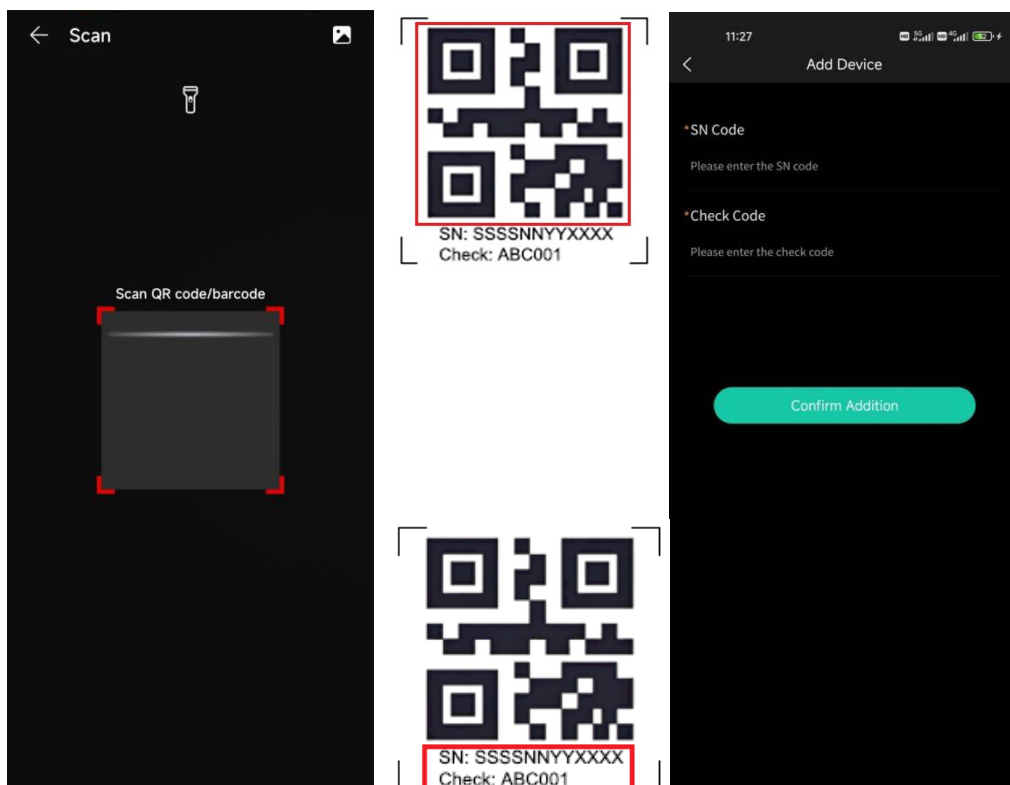
After the station is created successfully, click **“Add Devices”**.



There are two methods to connect the communication box: **Scan the SN code to add** or **Enter the SN code and Check Code**. (SN code will be printed on the communication box)

Method1: Scan the SN code to add

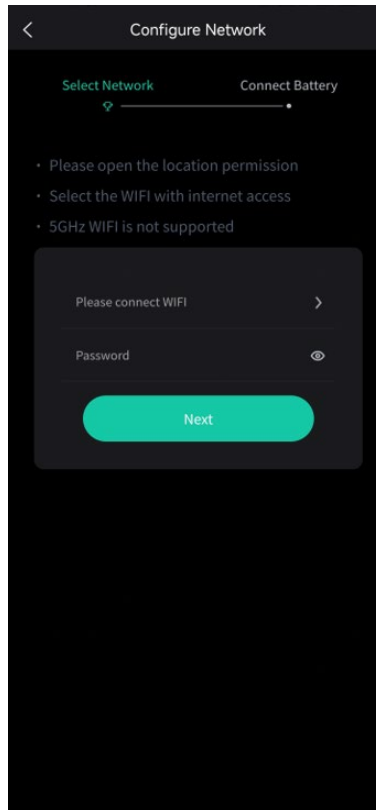
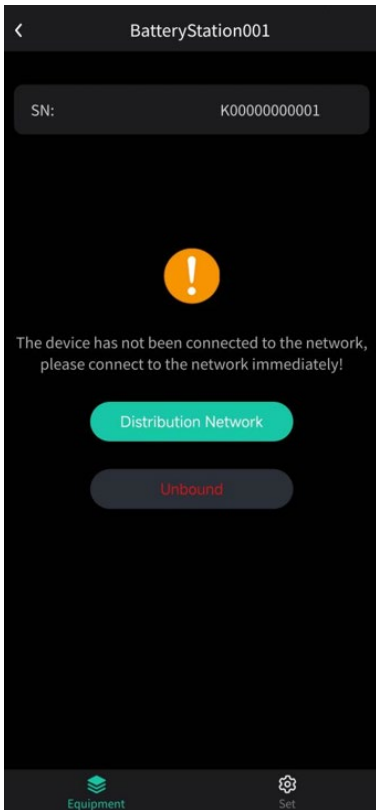
Method2: Enter the SN code&Check Code



Wi-Fi Connection

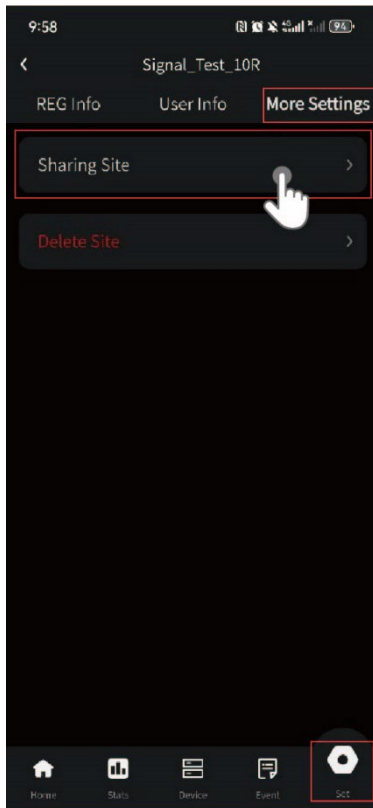
After devices have been added to the site, click the "**Distribution Network**" button to access the Connection page. Connect to WIFI, enter WIFI password and click "Next".

Connect the device Bluetooth, after successful connection, click the distribution network, wait 10-60S, the distribution network is complete, indicating that the distribution network is successful; If network distribution fails, go to the next step as prompted



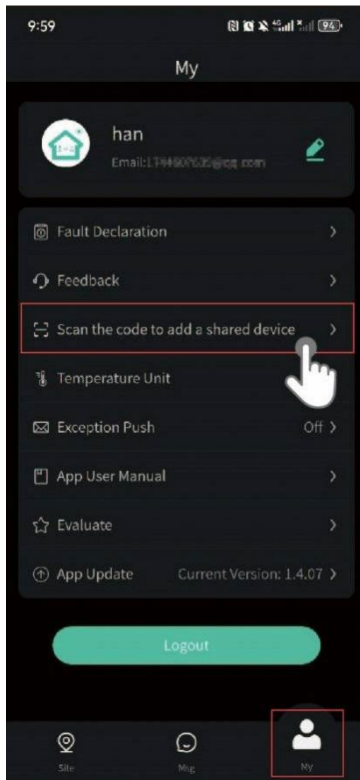
Sharing Station


Owners can share the site to other visitors to view the real-time status of the station. On the Station screen, tap **“Set-More Settings”**, click **“ Sharing Site”**.



Scan QR code to add station

On the home screen, tap “MY”. On the MY screen, tap “Scan the code to add a shared device”.



 **NOTE**

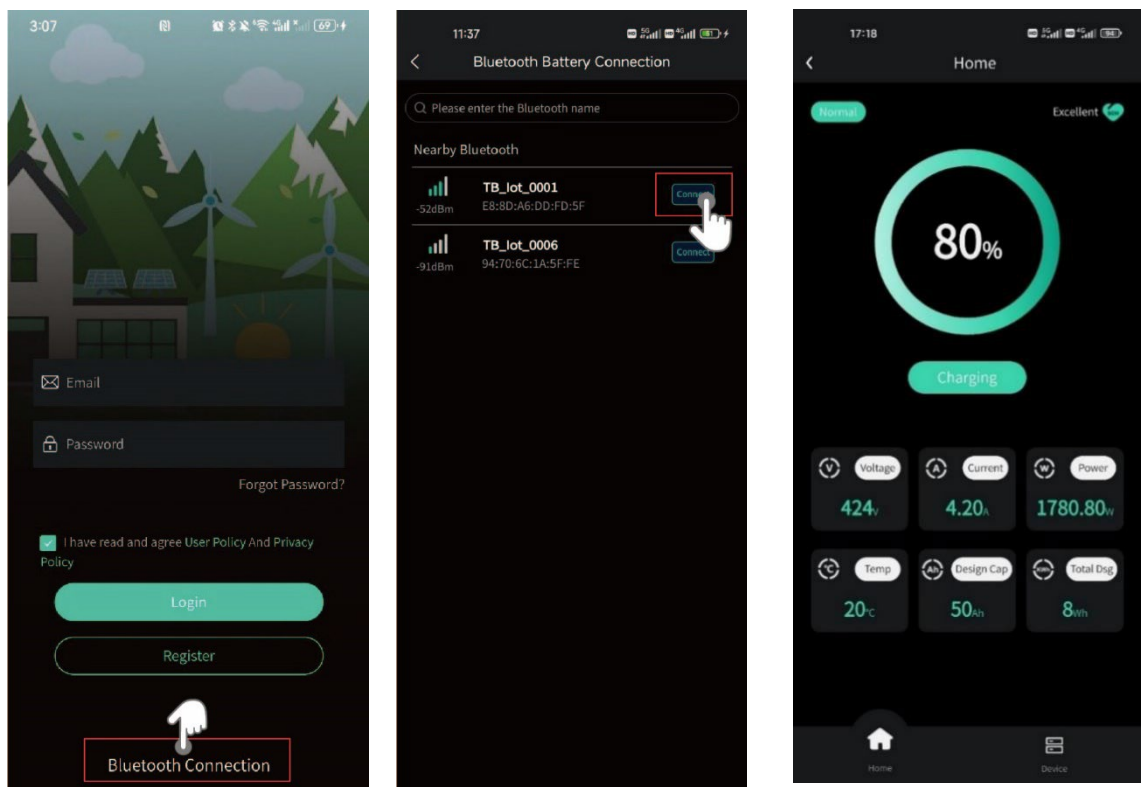
Visitors who add sites by scanning codes only have the permission to view data about stations.

Bluetooth connection


For devices that support the Bluetooth function, you can establish a Bluetooth connection between the mobile phone and the device through the App.

Procedure

Turn on the Bluetooth in the settings of your mobile phone and enter the home page of the App. Click the **“Bluetooth Connection”** on the Log-in page. It will automatically pop up a **“Bluetooth Battery Connection”** page, click the **“Device”** button to connect the device.



After the device is successfully connected, you can enter the station hone page.

 **NOTE**

If the device's Bluetooth cannot be found after the above steps, please check whether the device is powered on and try again. If you fail repeatedly, please contact the official customer service for technical support.

4. Device Control and Upgrade

Device Control

After connecting the device, the device page of the App will display the connected device. By clicking the corresponding device icon, you can enter the device details page to view the real-time status and data of the device and control the device.

Device is Online

When the App is connected to the device via Bluetooth, Wi-Fi hotspot, the device is online. You can view the device status and data in real-time on the App device details page, control the device, unbind the device, etc.

Device is Offline

When there is no Bluetooth, Wi-Fi hotspot between the App and the device, the device is offline, and you cannot view the device status and data or control the device in the App.



View Station Details

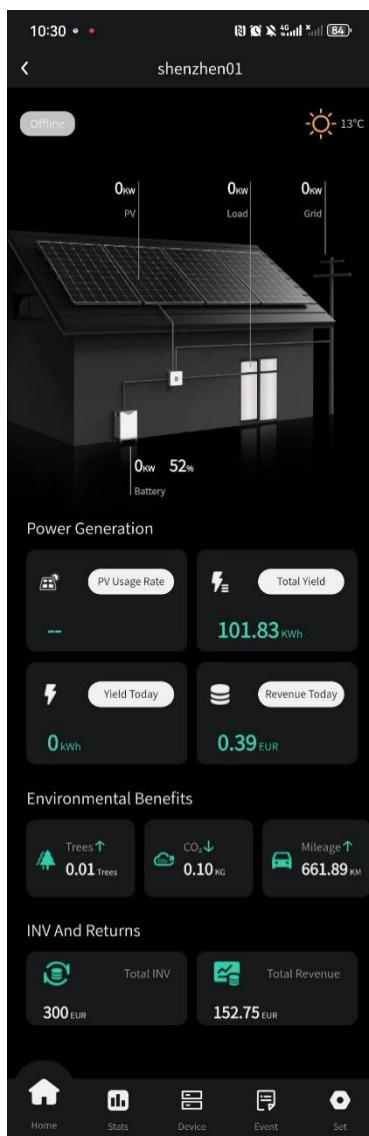
Power Station

Viewing the Power Station Status

Log in to the app and enter the Station screen to view Power Station details.

Home

You can view the energy flow diagram, energy yield, revenue, environmental benefits and investment & returns of power station in real time.

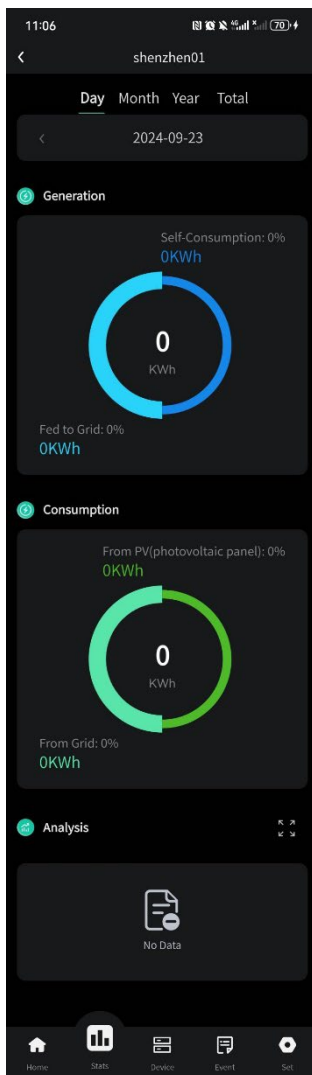


NOTE

- For details about Alarm: If a station has active alarms, the latest alarm information is displayed in the part of the “**Event**” screen. Tap the alarm to view its details.
- **Environmental Benefits:** Unlike thermal power plants, PV power plants generate electricity without CO₂ emissions, which is equivalent to planting trees.
- Data update: The data update time is 5 minutes.

Statistics

You can view the energy generation and consumption, energy analysis and revenue by different time dimensions.

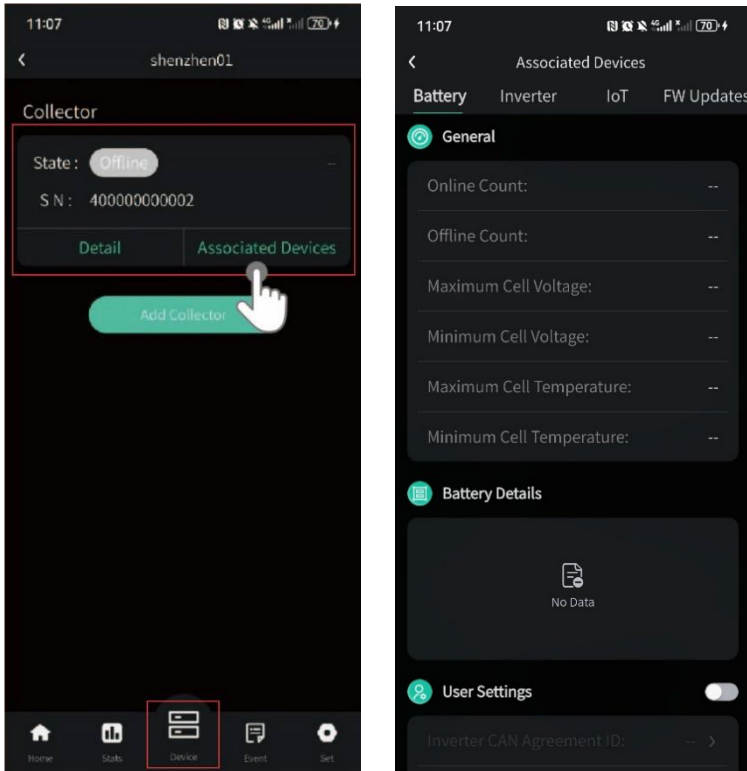


- **Generation:** Displays the energy yield statistics of PV plant.
- **Consumption:** Displays the energy consumption statistics of loads.
- **Analysis (Energy management):** It shows the graph of photovoltaic power generation, battery charge and discharge, load power consumption and grid consumption & feed-in by different time dimensions.
- **Revenue statistics:** Calculates the sum of feed-in revenue of a Power station (feed-in electricity x feed-in tariff) and savings in electricity bills (self-consumed electricity x purchase price) to display the benefits brought by the Power Station.

Device

Tap **Detail** on device screen and you can view the details about added collector.

Tap **Associated Devices** to view the running status and information of the corresponding device such as Battery, PV, Inverter and so on.



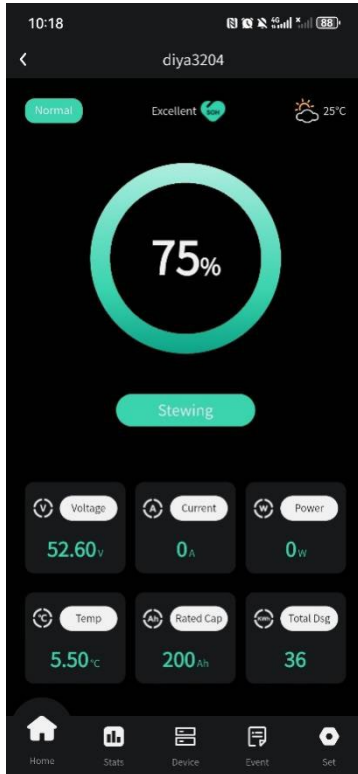
Device Setting

You can view and modify Registration information, User information and More settings about the site.

Battery Station

Home

You can view the running status and parameters of battery in real time. The parameters include state of charge, voltage, current, power, temperature, rated capacity and total discharging.

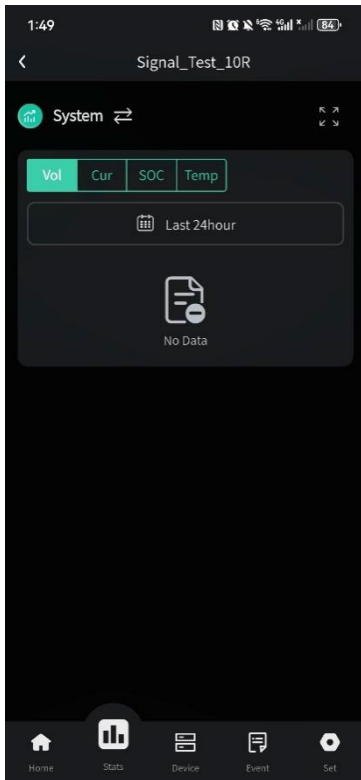


NOTE

- For details about Alarm: If a station has active alarms, the latest alarm information is displayed in the part of the “**Event**” screen. Tap the alarm to view its details.
- Data update: The data update time is 5 minutes.

Statistics

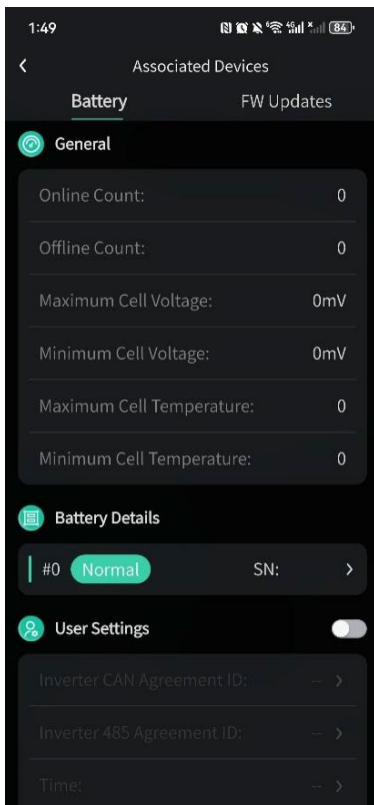
This screen will display a graph of voltage, current, soc and temperature of the battery station over a period of time. Tap **System or Cluster** to change the type of the data.



Device

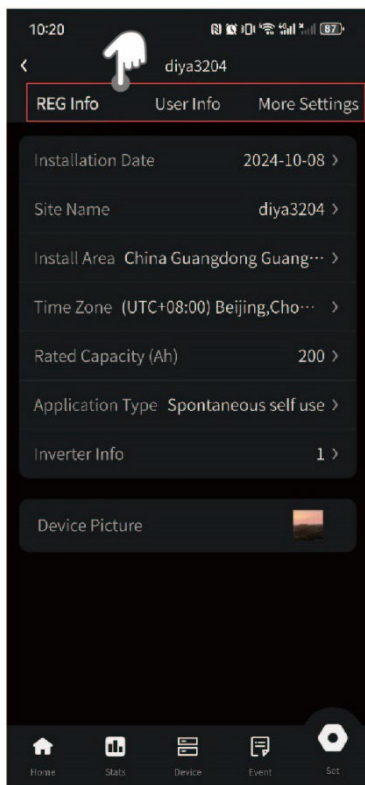
Tap Detail on device screen and you can view the details about added collector.

Tap Associated Devices to view the running status and information of the corresponding device.



Device Setting

You can view and modify Registration information, User information and More settings about the site.

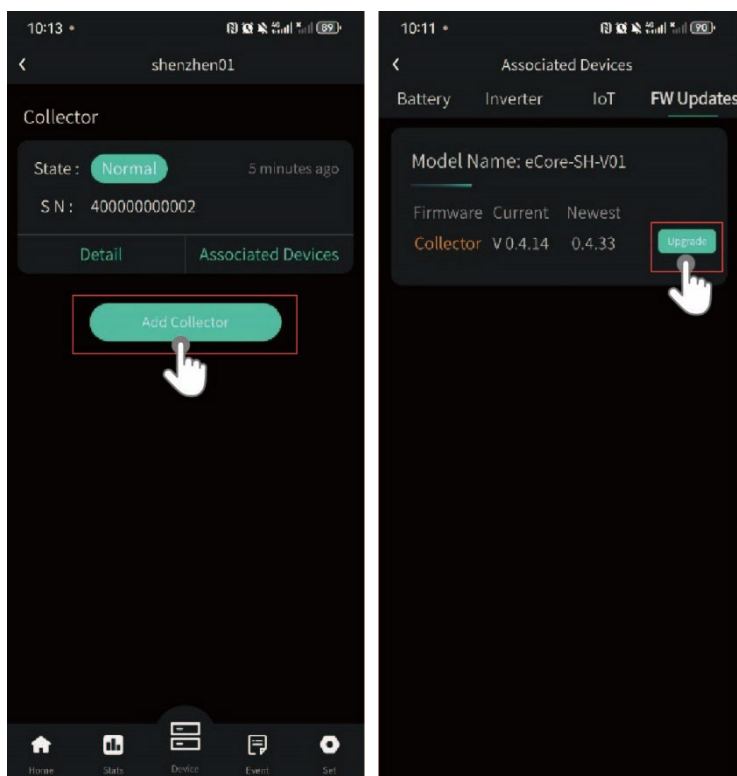


5. Firmware Upgrade

The firmware upgrade function is an essential feature of the E-power Go App which only support the device connecting by Wi-Fi hotspot. A new firmware version will be released to fix known bugs, improve performance, and add new features.

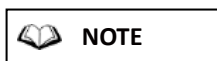
Check for new firmware version

Manual checking: You can upgrade the firmware by selecting the **"Device-Associated Devices-Firmware Updates"** item by entering the Device of a Station details page.



Firmware Upgrade - Online Upgrade

When the device connection status is Wi-Fi hotspot connection, you can perform the firmware upgrade. Click the **"Upgrade"** button on the firmware upgrade page to start the firmware upgrade.



If the firmware upgrade fails, you can retry according to the App guidelines or contact the official customer service for technical support.

6. Personal Setting and More

Modify nickname

Enter the E-power Go App, click the **"My"** button at the bottom to enter the My homepage, and then click the avatar and nickname area at the top to enter the Personal Settings page.

Select **"Change info"** to modify nickname or phone number.

Change Password

On the Personal Settings page, click the **"Change Password"** button, enter the previous and the new password twice according to the page prompts, and click **Finish**.

Account Cancellation

On the Personal Settings page, click the **"Account Cancellation and Deletion "** button, follow the prompts of the page step by step and complete the application. Since account cancellation is irreversible, we offer a **Cooling-off** period, and re-login within the period is considered as continuing the account

