

# Conext System Control Panel

Monitor and configure Conext inverter charger systems and Xanbus enabled accessories.



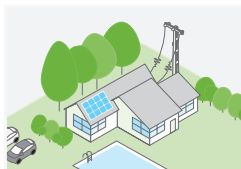
## Product at a glance

The Conext™ System Control Panel (SCP) eliminates the need for separate control panels for each device and gives a single point of control to set up and monitor the entire Conext inverter/charger system, including Conext MPPT Solar Charge Controllers. Featuring a graphical backlit liquid crystal display (LCD), the SCP selectively displays configuration, status, and diagnostic information for all devices connected to the Xanbus™ network.

## Product applications



Backup power



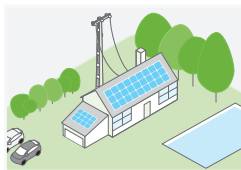
Residential grid-tie solar with backup power



Off-grid solar



Community electrification



Self-consumption

## Why choose Conext System Control Panel?

### Higher return on investment

- Get the most out of Conext inverter/charger systems and Conext MPPT Solar Charge Controllers
- Clearly understand status and settings
- Optimize system setup and device performance

### Designed for reliability

- Extensive quality and reliability testing

### Flexible

- Monitor and configure Conext™ XW Pro, XW+, SW, MPPT 60 150, MPPT 80 600, AGS, Battery Monitor
- Multiple SCPs can be used on the same Xanbus network
- Compatible with Conext™ Gateway

### Easy to service

- Access and troubleshoot Xanbus-enabled devices on the network from one location
- Remove and replace without the loss of device settings

### Easy to install

- Surface mount or panel mount on wall
- RJ45 connections for Xanbus network cables

### True bankability

- Warranty from a trusted partner with 180 years of experience
- World leader in industrial power drives, UPS and electrical distribution
- Strong service infrastructure worldwide to support your global needs

Device short name	Conext™ System Control Panel
<b>Electrical specifications</b>	
Nominal voltage	15 Vdc
Min. operating network voltage	14.25 Vdc
Max. operating network voltage	15.75 Vdc
Max. operating current at nominal voltage	200 mA
<b>General specifications</b>	
Dimensions (H x W x D)	15.2 x 10.3 x 4.0 cm (5.9 x 2.6 x 1.6 in)
Weight	200.0 g (0.4 lb)
Shipping weight	800.0 g (1.8 lb)
Mounting options	Panel-mount, wall-mount
IP rating/location	IP20, indoor only
Operating temperature range	-20 to 50 °C (-4 to 122 °F)
Part number	865-1050-01
<b>Features</b>	
Network	Protocol: Xanbus/Connectors: RJ45
Internal clock	Provides network time
Memory	Nonvolatile
Alarm	Audible
Display	Backlit LCD; Green/red LED
Front-panel interface	Four menu buttons, one standby button
Warranty	Please refer to our website, SEsolar.com for the latest version of the warranty statement.
<b>Regulatory approvals</b>	
Safety	CSA 107.1, UL 458 4 <sup>th</sup> Ed
EMC	CE directive 2004/108/EC, IEC/EN61000-6-3, IEC/EN61000-6-1, FCC Part 15B Class B, Industry Canada ICES-00. Class B, C-Tick
<b>Included parts</b>	
	One remote head
	One network terminal
	One CAT5 cable (2.1 m)
	One mounting plate
	One mounting bracket
	Four #8 screws
	Two #6 screws
<b>Compatible products part numbers</b>	
Conext XW Pro UL (120/240 V)	XW Pro 6848 NA: 865-6848-21
Conext XW+ IEC (230 V)	XW 8548 E: 865-8548-61
Conext XW+ UL (120/240 V)	XW 6848 NA: 865-6848-01
Conext SW IEC (230 V)	SW 4024: 865-4024-55 / SW 4048: 865-4048-55
Conext SW UL (120 V)	SW 4024: 865-4024-21 / SW 4048: 865-4048-21
Conext MPPT 80 600	865-1032
Conext MPPT 60 150	865-1030-1
Conext Gateway	865-0329
Conext Automatic Generator Start	865-1060
Conext Battery Monitor	865-1080-01
Conext Configuration Tool	865-1155-01

Specifications are subject to change without notice.